

Mobile phone synchronisation

User manual

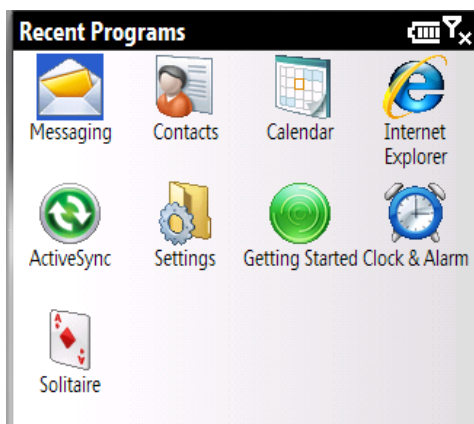
4net AG
Schoretshuebstrasse 26
CH-9015 St. Gallen

You can synchronise your Windows CE-Phone and all Sony-Ericsson P900 (and newer models) with the Exchange server via the software ActiveSync. The synchronisation happens over GPRS (possibly GSM) or WLAN. This can happen automatically or manually.

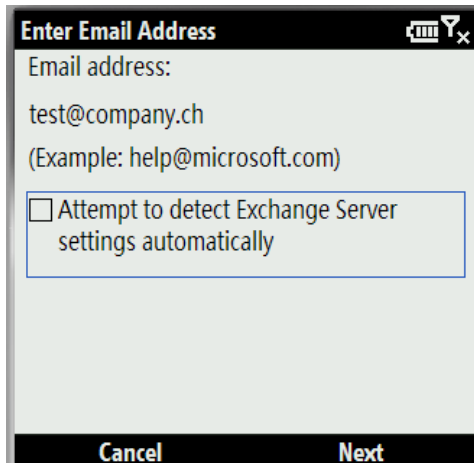
The following settings are for Windows Pocket PC, but also count for Sony Ericson products.

Configure ActiveSync

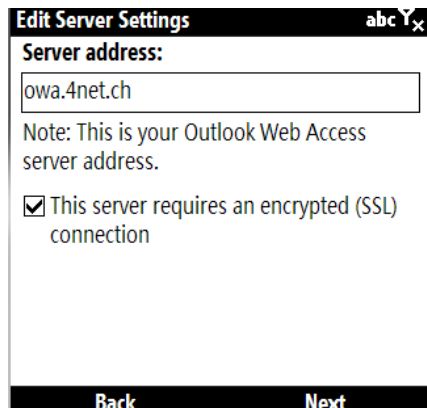
1. Start **ActiveSync** on your **mobile phone**:




2. Enter your email address and disable the automatic configuration:



- The server address is: **owa.4net.ch**
Make sure that you activate "This server requires an encrypted (SSL) connection"



Edit Server Settings abc 

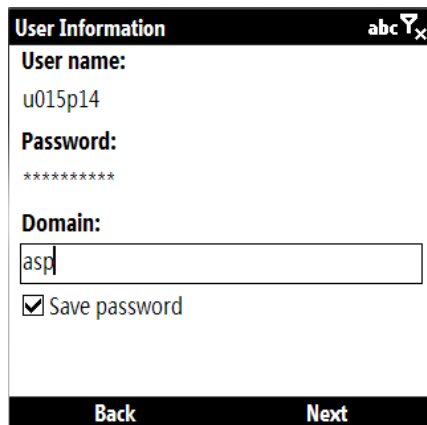
Server address:
owa.4net.ch


Note: This is your Outlook Web Access server address.

This server requires an encrypted (SSL) connection

Back **Next**

- Now add the Server information (username, password und Domain ASP) and chose **Save password**



User Information abc 

User name:
u015p14

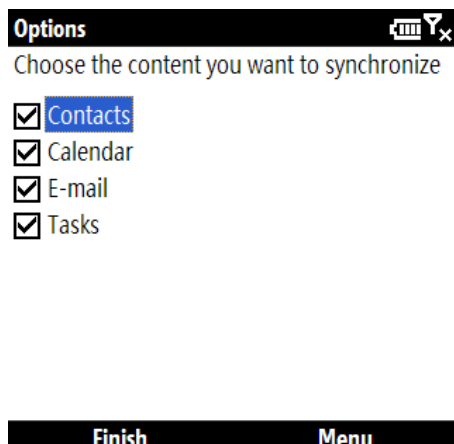
Password:


Domain:
asp

Save password

Back **Next**

- Chose the content you want so synchronize



Options 

Choose the content you want to synchronize

Contacts

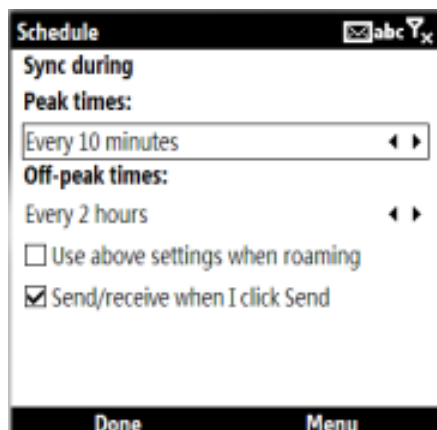
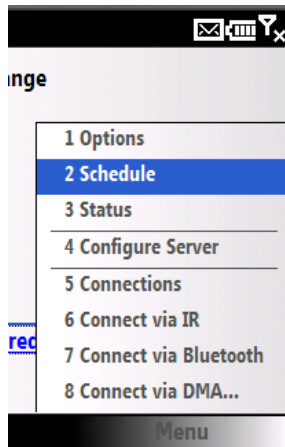
Calendar

E-mail

Tasks

Finish **Menu**

- Under Menu and Schedule you can configure when the phone should synchronise with the exchange server.



- Confirm all settings and start the synchronisation.