

Printing with ASP

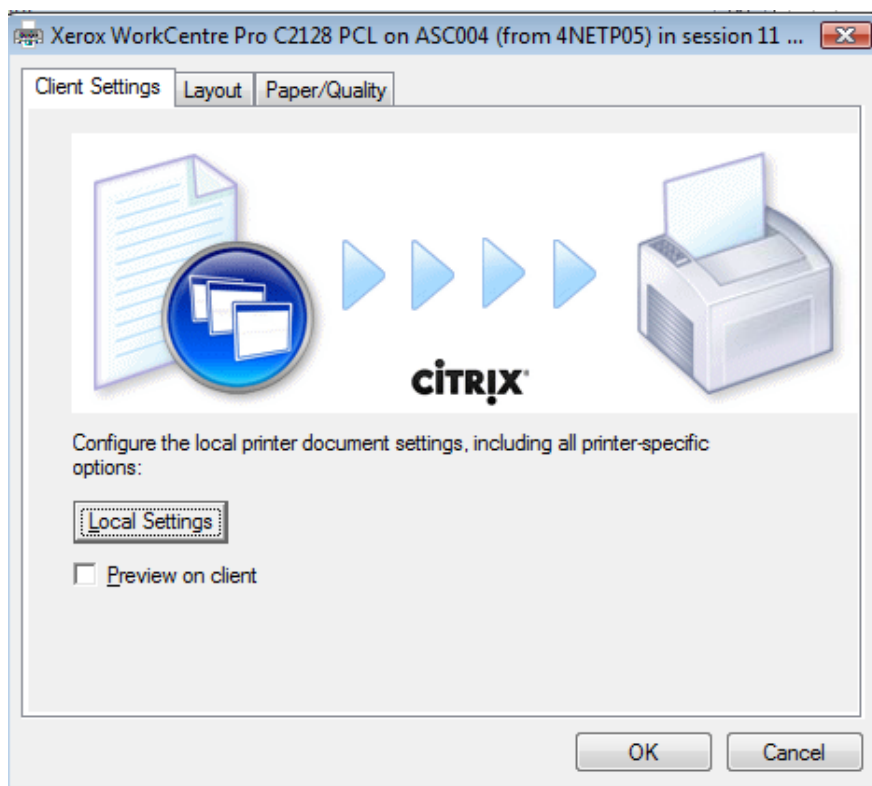
User manual

4net AG
Schoretshuebstrasse 26
CH-9015 St. Gallen

Printers which aren't installed on the ASP use a Universal Driver. This enables full access to all the functions of the locally installed printer!

Printing works just as usual. For the most printers the user interface of the printer looks exactly the same.

1. Open an application of your choice.
Chose File - Print and the settings. You see this menu:



If you click on local setting, the user interface of your local printer appears and you can edit the settings.

If you activate the box "Preview on client", the print job will appear on your monitor for a final check.